



PROPERTIES

FLOOR PLANS

5900 Butler Lane • Santa Cruz • CA

WWW.OWPROPERTIES.COM

Telephone:
831.247.5550

Fax: 831.429.8429

2857 Mission Street
Santa Cruz, CA 95060

For more information contact:

William Ow

831.247.5550

williamow1@aol.com

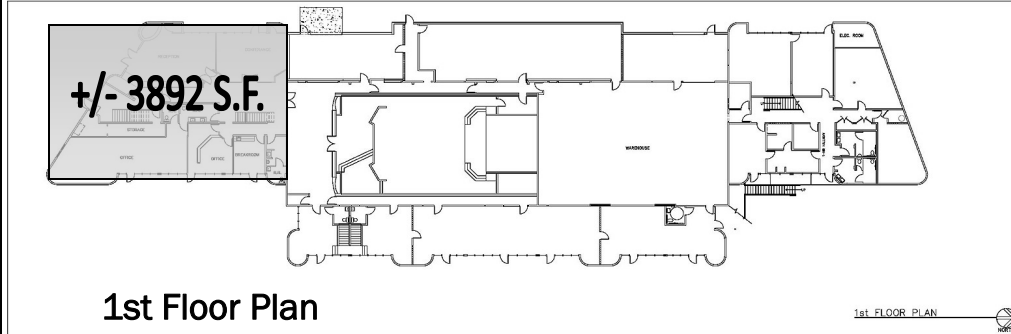
Office sizes available from

96 SF to 224SF

\$ 2.25– \$3.00NNN

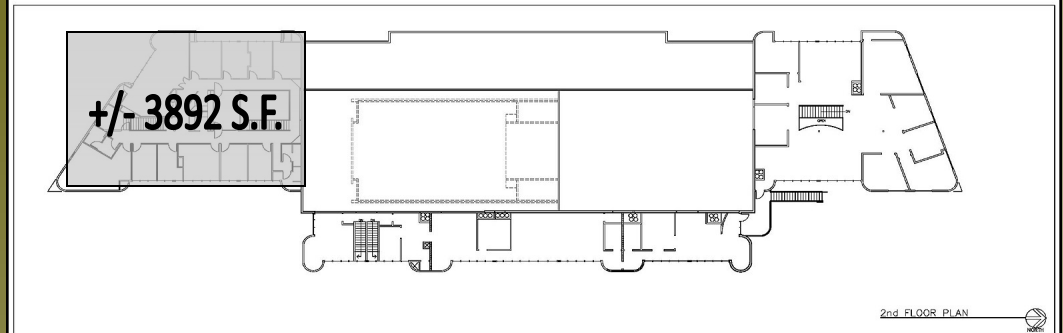
Great natural light

Next to the area's best amenities



1st Floor Plan

Executive Suites Available



2nd Floor Plan