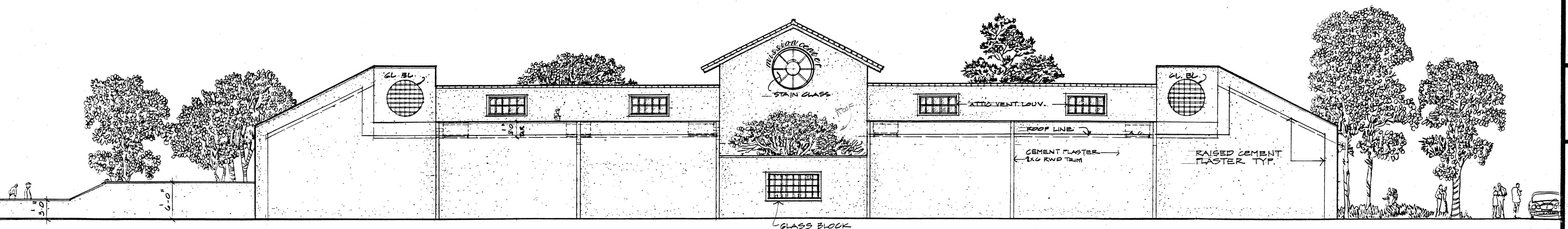


BLDG " B " WEST ELEVATION 1/8" = 1'-0"



BLDG. " B " EAST ELEVATION 1/8" = 1'-0"

MISSION CENTER  
 2335 MISSION STREET  
 SANTA CRUZ, CALIFORNIA

Checked by  
 1.  
 2.  
 Bldg. Dept.

Revisions  
 A STAIR FRONT  
 REV. 2-15-87

Date  
 12-2-87

Drawn by  
 K.G.

Job No.  
 87-29

Sheet  
**A-6**  
 Of --